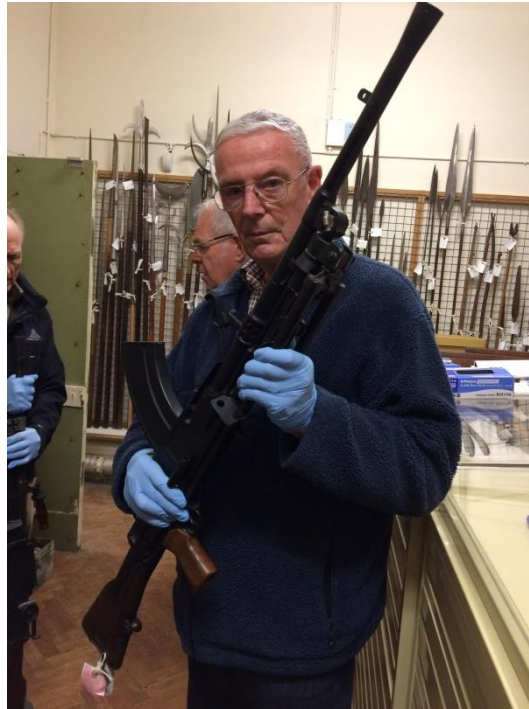


## Royal Engineers Museum 23<sup>rd</sup> November 2017.

Our group visit to the museum started off with a welcome from Daniella and tea/coffee with biscuits to warm us up. Daniella explained that we would be getting a behind the scenes tour of their Armoury which is not usually open to the public. Once inside to Armoury we were given disposable gloves to put on so we could handle the weapons and medals.



We handled a variety of weapons including Rifles, machine guns and swords. It was a privilege to handle the Victoria Cross medals awarded to Royal Engineers, see the inscriptions on the rear and hear from Daniella the heroic stories that lead to the awarding of the medals.

After leaving the Armoury we were free to explore the museum starting with the early Engineers. Their early history focuses on building and destroying fortifications. The Napoleonic Wars are featured including an interactive map of the Battle of Waterloo. The original map used by Wellington prior to the battle is also on display.

Their role in building and defending the British Empire using the latest technologies available are displayed in the next galleries. One example is the Brennan torpedo, this was wire guided using a land based steam engine. One was installed at Cliffe fort to sink enemy shipping coming up the Thames. The remains of the launch track can still be seen at the fort today.



Model of Cliffe Fort.



Brennan torpedo showing the drums holding the guiding/propelling wires.

The next gallery covers the First World War here you walk through the trenches and see command posts built by the Engineers.

In the Second World War gallery are examples of the work carried out around D-Day to get our troops ashore, along with the support and bridge laying to aid the advance. Whilst back home a scene of the Bomb Disposal work carried out during the Blitz is shown.



In the courtyard are more vehicles, a Harrier Jump Jet and a V2 rocket. The role of the Engineers during the decline of the British Empire and Cold War are outlined. An actual section from the Berlin Wall is also on display.



Finally up on the Mezzanine floor is a display of recent wars including Iraq and Afghanistan along with the equipment used by the Royal Engineers today.

The visit was finished off with some refreshment in the Courtyard Café.