

The Secret Nuclear Bunker, Kelvedon Hatch Essex

U3A 'How Things Work' Visit 16/02/2017

Present: John Beecham, Peter Webb, Paul Rutland, Howard Vicary, Roy Lingham, Dave Walters & Andrew Morgan.



Here we are outside the innocent looking Bungalow built in 1952. It doubles as the Guard House & entrance to the Bunker.

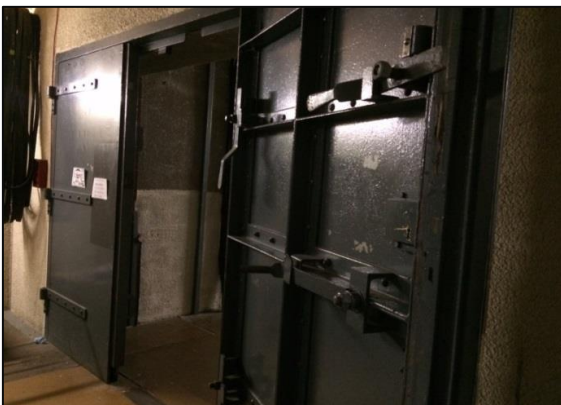
Inside the Bungalow is a 120m long tunnel that leads to the main Bunker three levels underground.

The Bunker started life as a RAF ROTOR station then became a Civil Defence Centre & finally a Regional Government HQ. It could be staffed by 600 personnel on complete lock down for 3 months.

On the various floors there are Standby Generators, Air filtration plant, Air conditioning plant, BBC Broadcasting Studio & Telecommunication equipment.

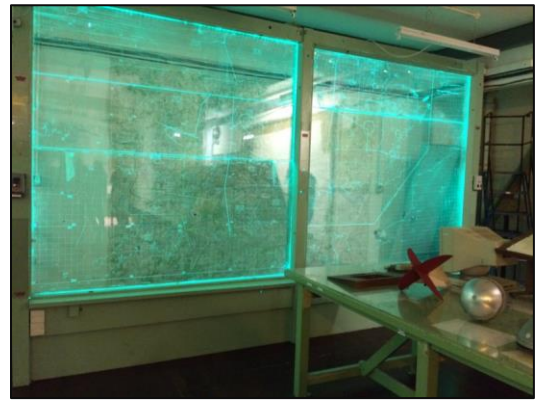


Air Conditioning Plant



Blast Proof Doors

There are plotting rooms, various Government department sections, sleeping quarters, hospital & a canteen.



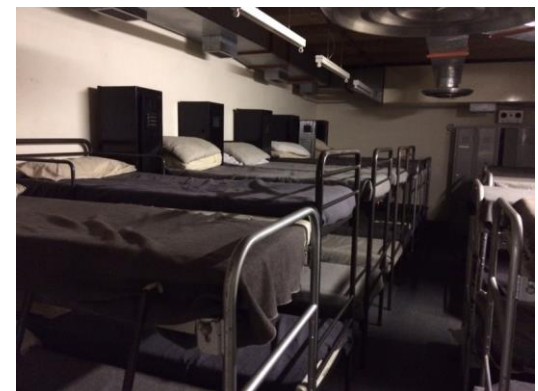
Plotting Room



Government Administration Room



Hospital



& finally . . . U3A afternoon nap area!

Throughout you are guided by a personal audio guide; along with numerous period films detailing what we should do if the bomb is dropped; it certainly reminded us of the potentially dangerous times we grew up in.

We finished the tour in the canteen for coffee & cake; a great day out for the £7 entrance fee!